

MOEN® 摩恩

直饮/洗涤下拉式厨房龙头

安装说明书

Filtration/Washing Pull-Down Kitchen Faucet

INSTALLATION INSTRUCTIONS

如需安装支持，配件丢失等，请联系MOEN。
(中国) 400-630-8866
www.moen.cn

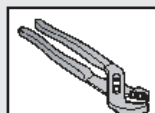
PLEASE CONTACT MOEN FIRST
For Installation Help, Missing or Replacement
Parts
(China) 400-630-8866
www.moen.cn

推荐工具

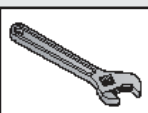
为了安全和让安装和替换变得容易，Moen建议您使用以下工具：

HELPFUL TOOLS

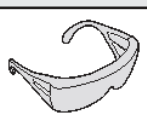
For safety and ease of replacement, Moen recommends the use of these helpful tools.



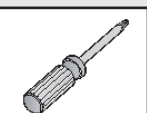
可调钳
Adjustable Pliers



活动扳手
Adjustable Wrench



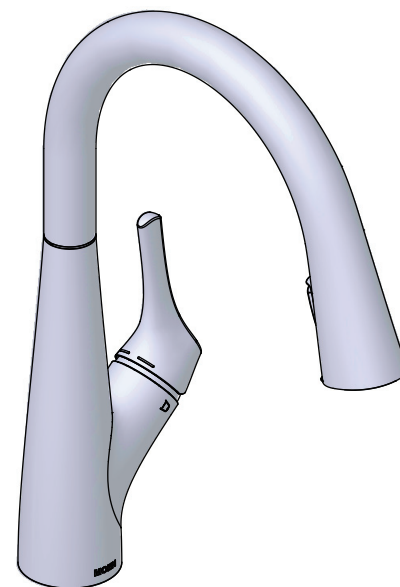
护目镜
Safety Glasses



十字螺丝刀
Phillips Screwdriver



螺纹密封带
Thread Seal Tape



图片仅供参考
(款式因型号而异)

Image is for reference only
(Style varies by model)

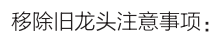
记录购买的型号：
(保存安装说明书以备将来参考)

Record Purchased Model Number:
(Save instruction sheet for future reference)



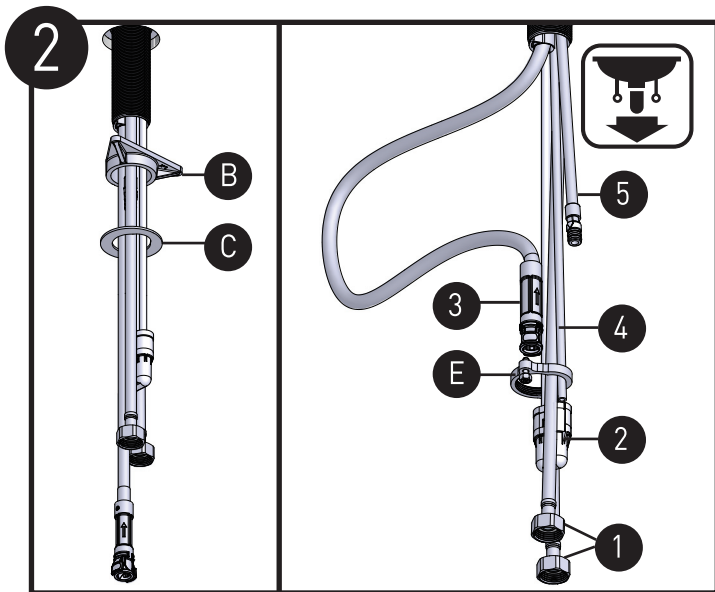
- A. 龙头本体
- B. 加高座
- C. 铁垫片
- D. 螺丝
- E. 安装螺母
- F. 重锤
- G. 卡套
- H. 快速接头组
- I. 花洒头

- A. Faucet Body
- B. Seat
- C. Metal Washer
- D. Screw
- E. Mouting Nut
- F. Weight
- G. Weight Clip
- H. Quick Connect Assembly
- I. Wand



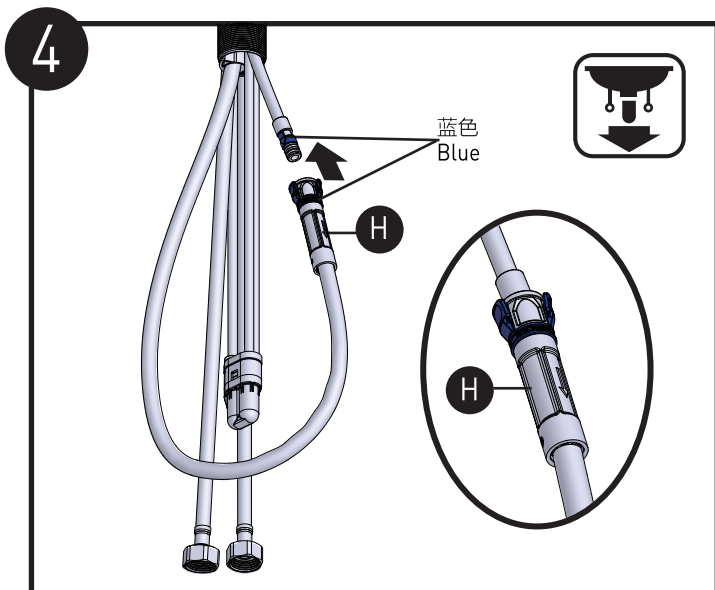
CAUTION — TIPS FOR REMOVAL OF OLD FAUCET:

Always turn water supply OFF before removing existing faucet or disassembling the valve.
Open faucet handle to relieve water pressure and ensure that complete water shut-off has been accomplished.



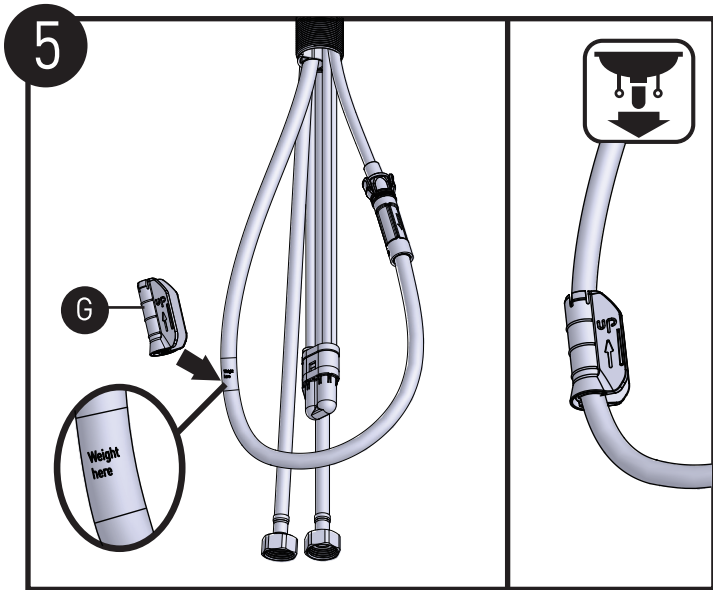
Insert the Faucet Body **(A)** through the hole in the sink.

1. Install the Seat **(B)** and the Metal Washer **(C)** onto the threaded mounting shank.
2. Pass the pipe on the faucet body through the mounting nut in turn. The recommended order is Inlet Hose **(1)** , Fluid Director Shell **(2)** , the Pull-out Hose **(3)** , Filter Water Intake Pipe **(4)** , Outle Hose **(5)** .



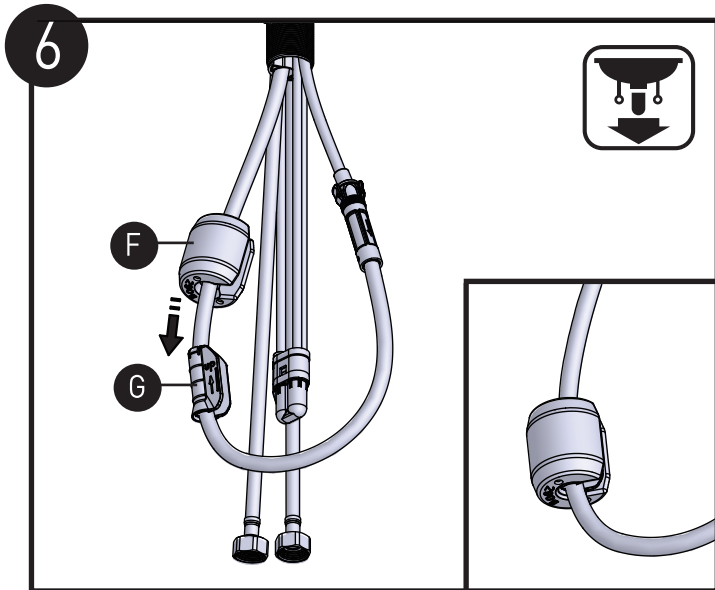
将带有蓝色压柄的快速接头组（H）连接到带有蓝色定位块的出水管上，用力向上推紧，然后适度下拉，以确保连接完成。

Push the Quick Connect Assembly **(H)** with the blue tag firmly upward and attach it to the receiving block with a matching blue tag. Pull down moderately to ensure the connection is ok.



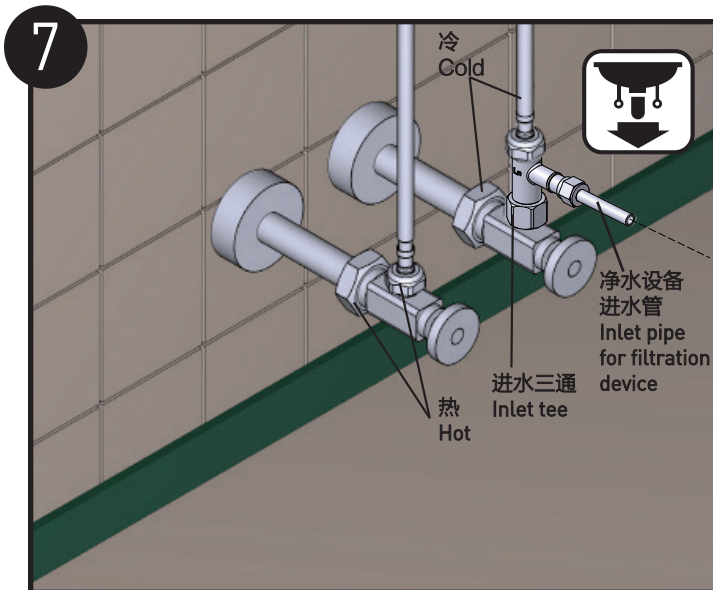
把卡套 (G) 卡在软管上贴有“weight here”标贴的位置。

Install the Weight Clip **(G)** at the point of the hose marking “weight here”.



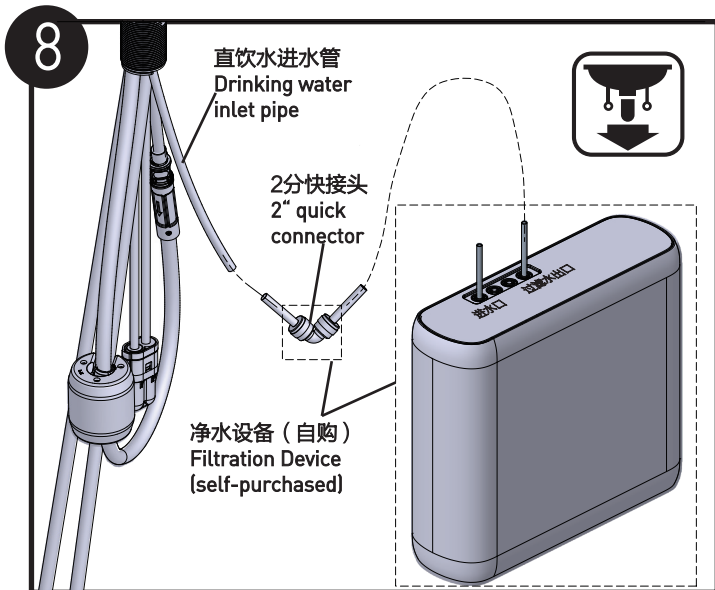
将重锤 (F) 装到抽取软管上, 然后向下滑动, 插入到卡套 (G) 上。

Install the Weight **(F)** at the hose, then insert the Weight **(F)** onto the Clip **(G)** by sliding it down onto the Weight Clip **(G)**.



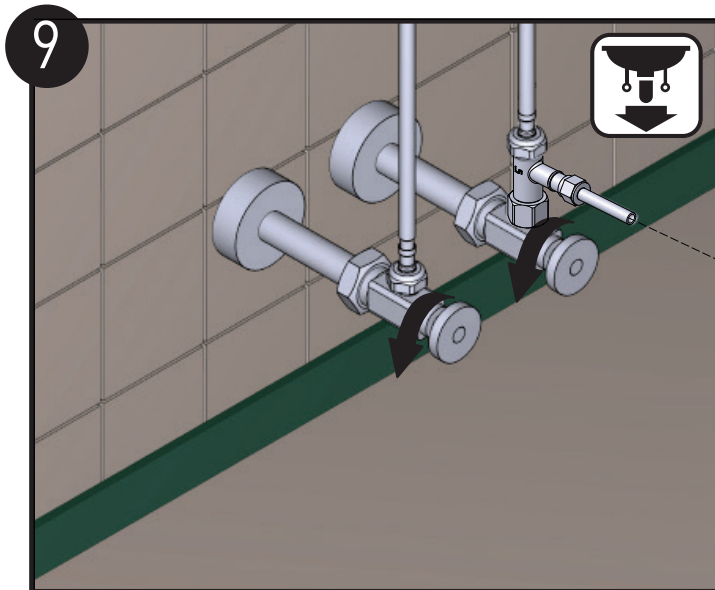
将龙头冷热水管分别正确地连接到冷热进水口。

Connect the hot/cold supply hoses to the corresponding supplies.



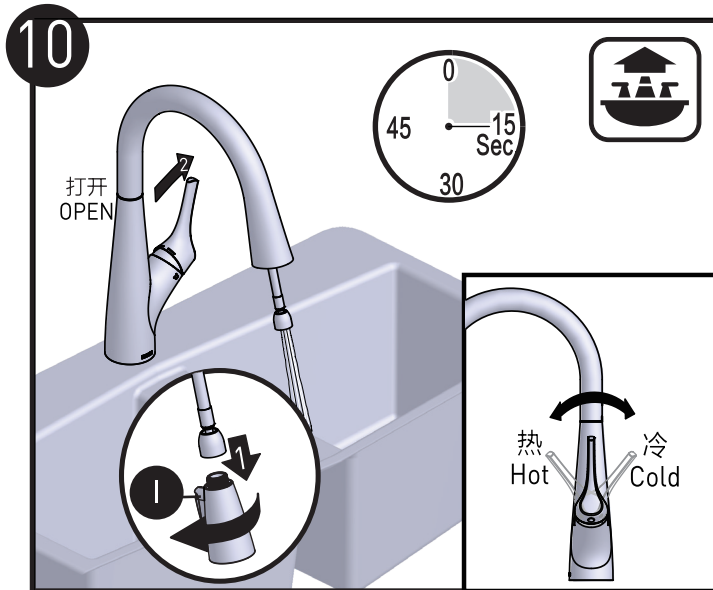
将直饮净水管通过2分快接头（净水机一般会配备）连接到净水设备。
注：以上与净水系统连接的示意图仅供参考，具体视实际情况而定。

Connect the Drinking Water Inlet Pipe with Filtration Device through a 2" Quick Connector which is provided with Filtration Device generally. The schematic diagram above is for reference only, which depends on the actual situation.



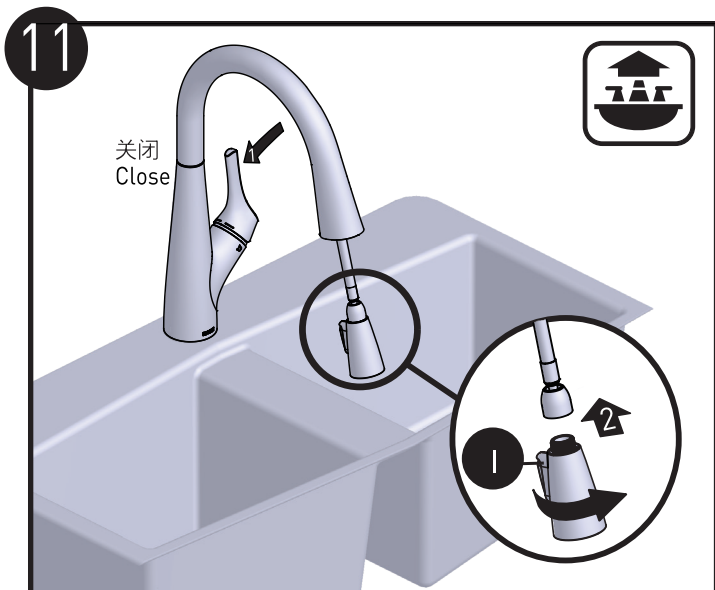
打开冷热水角阀，检查是否有漏水。

Turn on hot and cold water shutoff valves. Check for leaks.



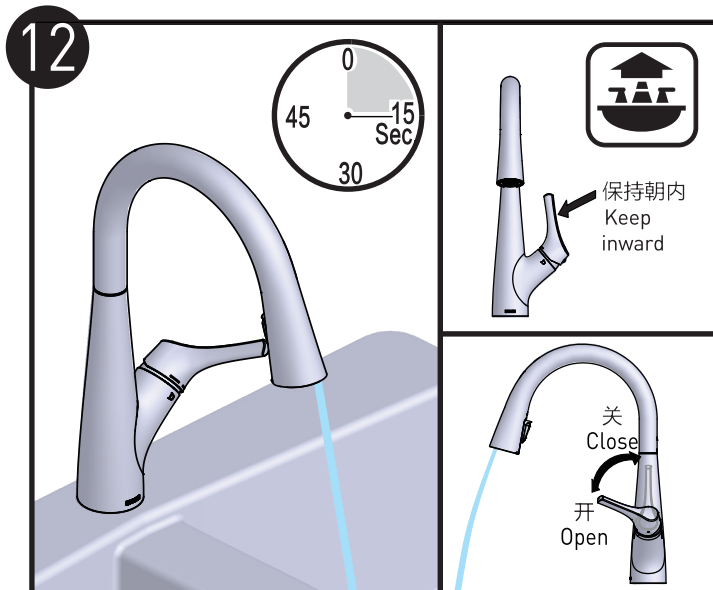
1. 逆时针旋转花洒头 (I)，把花洒头从抽取软管上移除。
2. 打开把手，让冷热水混合流动15秒，冲洗水路中的异物，检查是否有漏水。

1. Pull the hose assembly out of the spout and remove the Wand (I) by unscrewing it from the hose counterclockwise.
2. Run hot and cold water for 15 seconds. This flushes away any debris that could cause damage to internal parts. Check for leaks.



1. 关闭把手。
2. 重新把花洒头 (I) 装回抽取软管上，用手顺时针旋紧。

1. Turn the handle off.
2. Reinstall the Wand (I) back onto the spray hose and tighten it clockwise.



保持把手朝内的关闭状态，然后将把手推往朝着自己的方向，激活过滤水。让水持续流动15秒。安装完成。

Make sure the the faucet is closed and do not open the handle outward. Pull the handle towards yourself to activate the filtered water. Run the water for 15 seconds. The installation is complete.

产品售后保修条款

摩恩产品是在高质量标准及生产工艺下制造的，摩恩承诺为消费者购买的洁具产品提供有期限免费保修及终身维修服务。

龙头免费保修期为：阀芯5年，电磁阀感应器2年，其它附件如淋浴杆、软管、花洒、落水、把手、装饰盖、提拉杆、混水器等保修期均为1年有限。均自消费者购买日（以摩恩产品分销商开具的发票或收据上载明日期为准）起计。

免费保修范围为产品及产品配件（如淋浴杆、软管、花洒、落水、把手、装饰盖、提拉杆、混水器等）由于材质及工艺原因而造成的故障或损坏。免费保修期内，我们将无偿为您提供修理服务及更换发生故障的产品或产品配件。摩恩的售后服务责任仅限于对故障产品的修理，而不延及您因产品故障而发生的其他损失，法律另有规定的除外。

您需了解：产品外观碰伤、刻划痕迹，以及滥用及不正当保养所导致的故障或损坏，均不属于免费保修范围。即使在免费保修期内，属下列（1）-（5）情况之一的，需酌情收取修理费用：

1. 不能出示相符的保修卡和有效购买凭证情况的，
2. 未按使用说明告知的使用方法和注意事项造成的故障，
3. 自行拆卸、维修、改装所造成的故障和损坏，
4. 由于不可抗力等外部原因引起的故障和损坏，
5. 由于运输、搬运、挤压等造成的损坏。

对于保修期外或不在保修范围内的产品，如需维修，摩恩将酌情收取上门费、人工费及材料费。

本保修条款仅对原始消费者和酒店行业的购买者有效，并不适用于本产品工业、商业、贸易和非酒店行业的使用。

如对本保修条款内容有任何疑问，请拨打400 630 8866 咨询热线，或向当地分销商咨询。

MOEN LIMITED WARRANTY

We offer limited warranty and lifetime maintenance for Moen products, which are all manufactured with high standards of workmanship.

The period of warranty shall start from the date of purchase of the product (according to the invoice or receipt issued by Moen distributors) and shall cover a period of the following: the warranty period for cartridge is 5 years, the warranty period for solenoid valve sensor is 2 years, the warranty period of other accessories such as shower bar, hose, shower, drain assembly, handle, cover, lift rod, aerator etc. is 1 year.

This warranty is your coverage against material and workmanship malfunction or defects in Moen products or components (such as shower bar, hose, shower, drain assembly, handle, cover, lift rod, aerator etc.). During the warranty period, we offer free maintenance and changing of malfunctioned products or product components. Moen's after sales service liability is limited to the maintenance of faulty items and does not cover your other losses caused by product malfunction, except for otherwise stipulated by law.

Cosmetic damages (scratches, dents, etc.) and malfunction or defects caused by abuse or improper maintenance is not covered by this warranty. Although the warranty period remains valid, in case of the following conditions (1) - (5), the maintenance cost (material cost and labor cost) shall still be charged as the case may be:

1. Corresponding warranty card and valid invoice cannot be presented;
2. Faults were caused by the incompliance with the instructions and precautions provided in the user's manual;
3. Damages and faults were caused by self-actuated dismantling, repair and refit;
4. Faults and damages were caused by external factors such as force majeure;
5. Damages were caused by transportation, unloading and extrusion, etc.

This warranty is valid for the original consumers only (including hotel use), and excludes industrial and commercial use of the product (except for hotel use). This card is only responsible for product maintenance rather than any other liabilities.

In the event that the product requires maintenance but exceeds the warranty period, or that the product is not covered by this warranty, labor cost and material cost shall be charged as the case may be.

Please call 400-630-8866 or contact local dealer for any question.

MOEN® 摩恩

合格证

Compliance Certification

产品名称 直饮/洗涤下拉式厨房龙头
Product Name Filtration/Washing Pull-Down Kitchen Faucet

检验员
Inspector

生产日期
Date of Production

富俊汇赢科技（上海）有限公司
中国（上海）自由贸易试验区新杨公路
1800弄1号4幢207室
邮编：201413

Fortune Brands Innovations (Shanghai) Co., Ltd
Room 207, Building 4, No. 1, Lane 1800, Xinyang Highway,
China (Shanghai) Pilot Free Trade Zone